

Keep looking
you'll never find me



VRV IV heat pumps for indoor installation



Keep looking you'll never find me

Daikin VRV IV i-series offers you the most aesthetic and integrated air conditioning solution ever. It provides the widest VRV solution for any inner-city location. It has no visual impact and is quiet, so it is easy to comply with building regulations. It also has unrivalled flexibility when it comes to installation.

Why choose Daikin VRV IV i-series?

You can install highly efficient, reliable Daikin air conditioning systems in the most demanding locations while remaining invisible from street level.

Invisible

- ✓ Unique VRV outdoor solution
- ✓ Seamless integration into surrounding architecture
- ✓ Total flexibility for any shop location and building type due to the unlimited possibilities of our of solutions
- ✓ Premises can be opened sooner as building permits are easier and faster to obtain
- ✓ Outdoor air conditioning units can now be fitted where this was previously not an option
- ✓ Easy to comply with planning regulations, the best solution for urban locations such as banks, shops or almost any other application you can think of

Daikin VRV efficiency, comfort and control

- ✓ Highest seasonal efficiency rating in their class (ESEER), reducing energy, costs and CO₂ emissions
- ✓ Unique Variable Refrigerant Temperature eliminates cold draughts and continuously adjusts unit operation to the actual conditions, maximising seasonal efficiency
- ✓ Centralised, easy to use controls ensure optimum operation, maximising efficiency and comfort

Quiet

- ✓ Highly suited to densely populated areas such as city centres thanks to their low operating sound
- ✓ Dedicated modes reduce sound further to comply with inner-city noise regulations

Flexible installation

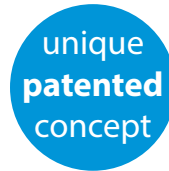
- ✓ Unrivalled flexibility because the unit is split into two elements, the heat exchanger and the compressor
- ✓ Lightweight units reduce installation time and effort
- ✓ Compact dimensions maximise useable floorspace
- ✓ Invisible VRV flexibility

Leading after-sales support

- ✓ Support wherever you need it from the widest network of highly trained professionals
- ✓ Professional selection tools and excellent expert support reduce installation time, ensuring optimum operation and lower running costs
- ✓ A single point of contact, even for multiple properties in multiple countries

VRV IV i-series

The city secret



The VRV IV i-series is a truly unique solution for installations where you want a completely invisible solution. The system is installed entirely indoors and only the grilles are visible.

Dedicated range for indoor installation

Invisible

- › You can consider a wider range of properties because outdoor installation is not a factor
- › You can open for business sooner because getting building permits is simplified
- › No need for a rooftop or back alley installation
- › Quicker and more cost-effective installation

Intuitive

- › Split outdoor unit for unrivalled flexibility
- › Easy and quick to transport and install by just 2 persons
- › Easy servicing, all components can be easily reached

Intelligent

- › Variable Refrigerant Temperature for best seasonal efficiency & comfort
- › Patented V-shape heat exchanger for the most compact unit (400 mm high) ever
- › Centrifugal fan for the highest efficiency in the market
- › Inverter fan can be easily adjusted to the length of ductwork

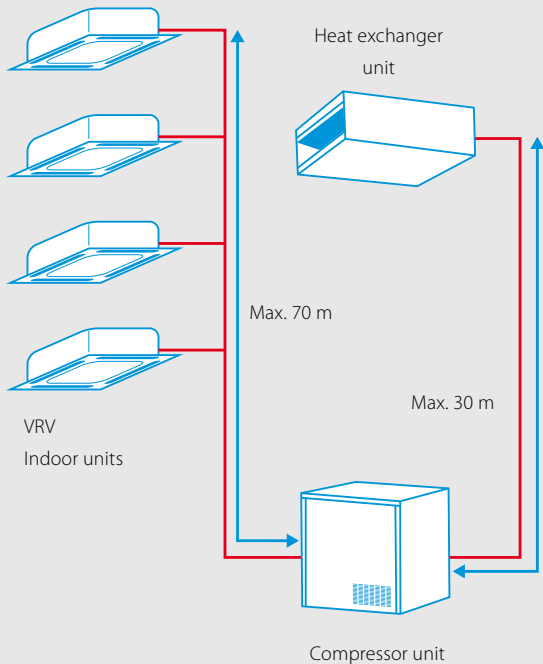




You can use the decorative elements on a building's façade, such as pediments or logos, to hide the grilles making the installation completely invisible

from street level. Or you can incorporate the grilles into the building design so that they are a part of the building's appearance.





Unique split outdoor unit for indoor installation

Compact and easy to hide, the compressor can be installed at floor level, in a back office, storage room, technical area or in a kitchen, while the heat exchanger can be installed in a false ceiling space. This means that the air conditioning system is completely invisible and does not take up expensive commercial floor space.

Flexible and easy to install

- › Unrivalled flexibility thanks to the fact that the outdoor unit is split into two parts
- › Shorter pipe runs to the indoor units reduces installation costs
- › Lightweight parts can be installed by two people
- › Installation can be carried out on the façade or at the rear of the building as the inverter fan allows ESP to be adjusted to the length of ductwork
- › Rotating switchbox for easy access to all compressor parts

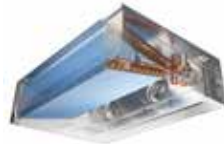


rotating switchbox

Unique technologies

V-shape heat exchanger

- › Revolutionary new design within the VRF market
- › VRV IV i-series deliver top efficiency, yet the unit is only 400 mm high
- › Optimised shape for higher air flow and static pressure, resulting in much higher efficiencies when compared to standard outdoor units which are installed outdoors



V-shaped heat exchanger

Centrifugal fans

- › Super efficient centrifugal fans (over 50% efficiency increase compared to sirocco fan)
- › Patented backward- curved blade technology



centrifugal fan

Compact compressor unit

- › Small footprint maximizing useable floor space (600 x 550 mm)
- › Can easily be mounted in a storage room or back office
- › Rotating switchbox for easy maintenance

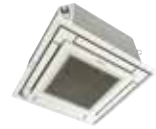




A true VRV IV

Total solution

- ✓ Widest range of indoor units to fit your needs (cassette, concealed ceiling, wall mounted, ceiling suspended and floor standing)
- ✓ Connect up to 10 indoor units to one outdoor unit
- ✓ Unique designs such as the fully flat cassette blend with any décor
- ✓ Dedicated control solutions for shops, banks and other applications
- ✓ Provides a total solution when combined with ventilation units and Biddle air curtains



Fully flat cassette



Intelligent Touch Manager



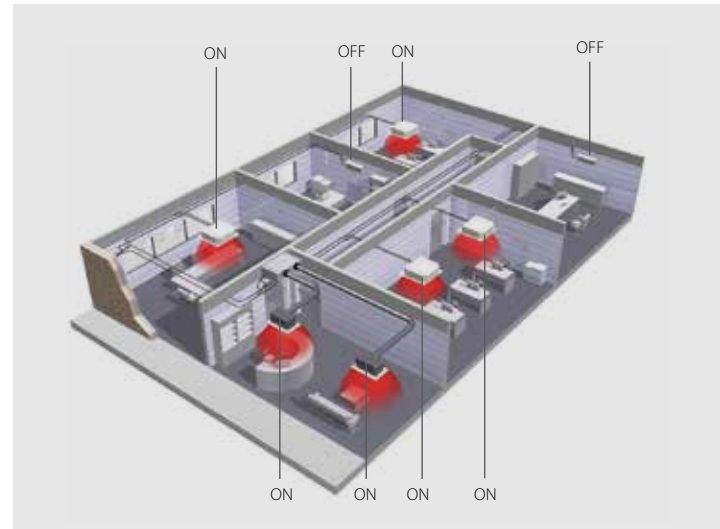
Biddle air curtain



Air handling unit ventilation

Individual control on site or remotely

- ✓ Control individual areas of your property for maximum efficiency
- ✓ Zone by zone installation tailored to the needs of the building
- ✓ Unique Variable Refrigerant Temperature for maximum customised comfort and intelligent control tailored to your individual needs
- ✓ Multiple sites can be configured and controlled consistently from a central location
- ✓ **i-Net** Intelligent energy visualization tool that helps you with your energy management



A cost effective solution

Even when it is possible to install an outdoor unit there are reasons that an indoor installation offers a better solution, such as in areas where there is a mixture of commercial and residential use. The units are invisible and because they are installed indoors, there is no need for costly sound insulation. There is also no need to use a crane for installation as the unit comes in two parts. That is why the VRV IV i-series are easier and less costly to install.





Concealed ceiling unit FXSQ-A: Slimmest yet most powerfull medium static pressure unit on the market!



Round flow cassette FXFQ-A:
360° air discharge for optimum efficiency and comfort



Ceiling suspended unit FXUQ-A:
Unique Daikin unit for high rooms with no false ceilings nor free floor space

Concealed floor standing unit FXNQ-A:
Fully integrated in the wall



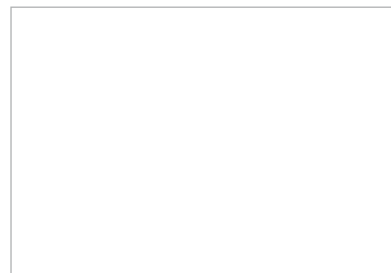
Concealed ceiling unit FXDQ-A:
Slim design for flexible installation

Specifications

Outdoor system				SB.RKXYQ	5T
System	Compressor unit				RKXYQ5T
	Heat exchanger unit				RDXYQ5T
Capacity range	HP				5
Cooling capacity	Nom.	35°CDB		kW	14.0
	Nom.	6°CWB		kW	14.0
Heating capacity	Max.	6°CWB		kW	16.0
	Cooling	Nom.	35°CDB	kW	4.38
Power input - 50Hz	Nom.	6°CWB		kW	3.68
	Heating	Max.	6°CWB	kW	4.71
EER	at nom. capacity		35°CDB	kW/kW	3.20
COP	at nom. capacity		6°CWB	kW/kW	3.80
	at max. capacity		6°CWB	kW/kW	3.40
Maximum number of connectable indoor units					10 (1)
Indoor index connection	Min.				62.5
	Max.				162.5
Fan	External static pressure	Max.	Pa		150
		Nom.	Pa		60
Operation range	Cooling	Min.~Max.		°CDB	-5~46
	Heating	Min.~Max.		°CWB	-20~15.5
	Temperature around casing	Min.	°CDB		5
		Max.	°CDB		35
Piping connections	Between Compressor module (CM) and heat exchanger module (HM)	Liquid	OD	mm	12.7
		Gas	OD	mm	19.1
	Between Compressor module (CM) and indoor units (IU)	Liquid	OD	mm	9.5
		Gas	OD	mm	15.9
	Total piping length	System	Actual	m	

(1) Actual number of units depends on the indoor unit type (VRV DX indoor, etc.) and the connection ratio restriction for the system (being: 50% ≤ CR ≤ 130%).

Outdoor unit module					RKXYQ5T compressor module	RDXYQ5T heat exchanger module	
Dimensions	Unit	Height/Width/Depth			mm	701/600/554	397/1,456/1,044
Weight	Unit				kg	77	97
Fan	Type						Centrifugal
	Air flow rate	Cooling	Nom.	m ³ /min		-	55
	Discharge direction						Discharge duct
Sound pressure level	Cooling	Nom.			dBA	47	47
	Type/GWP					R-410A/2,087.5	R-410A/2,087.5
Refrigerant	Charge			kg/TCO ₂ Eq	2/4.2	-/-	
	Power supply				Phase/Frequency/Voltage	Hz/V	3N~/50/380-415
Current - 50Hz	Maximum fuse amps (MFA)				A	16	10



ECPEN16-207

CD - 09/15

Daikin Europe N.V. Naamloze Vennootschap
Zandvoordestraat 300 · 8400 Oostende · Belgium
www.daikin.eu · BE 0412 120 336 · RPR Oostende
(Responsible Editor)

The present publication is drawn up by way of information only and does not constitute an offer binding upon Daikin Europe N.V. Daikin Europe N.V. has compiled the content of this publication to the best of its knowledge. No express or implied warranty is given for the completeness, accuracy, reliability or fitness for particular purpose of its content and the products and services presented therein. Specifications are subject to change without prior notice. Daikin Europe N.V. explicitly rejects any liability for any direct or indirect damage, in the broadest sense, arising from or related to the use and/or interpretation of this publication. All content is copyrighted by Daikin Europe N.V.

The present publication supersedes ECPEN15-207
Printed on non-chlorinated paper.